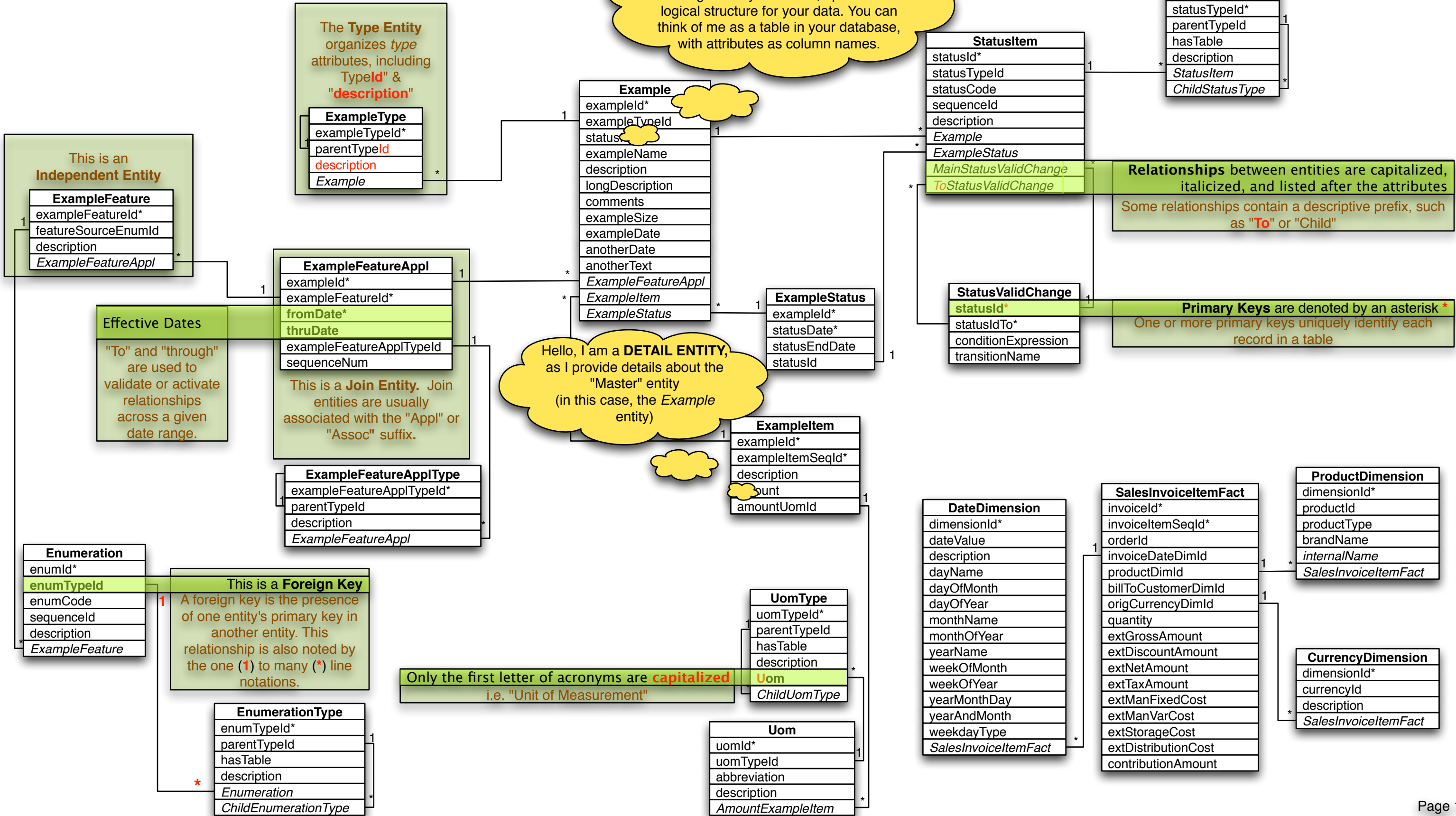
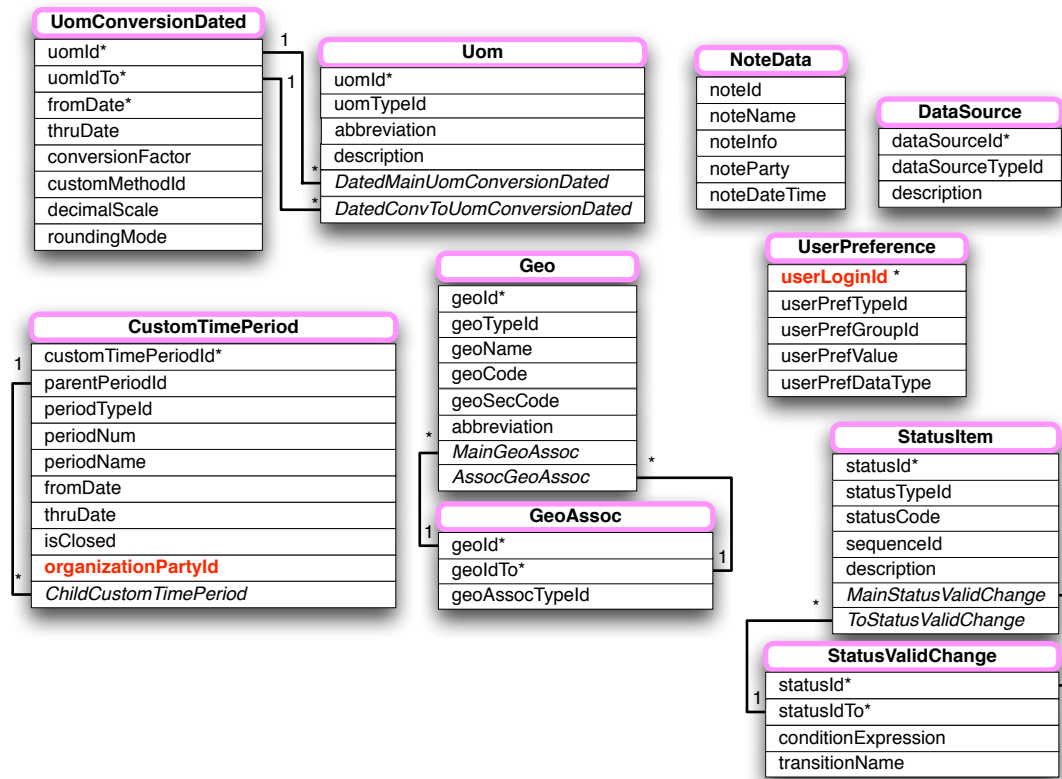


Hello, I am an **ENTITY**. I classify and organize data under a set of attributes. Along with my attributes, I provide a logical structure for your data. You can think of me as a table in your database, with attributes as column names.

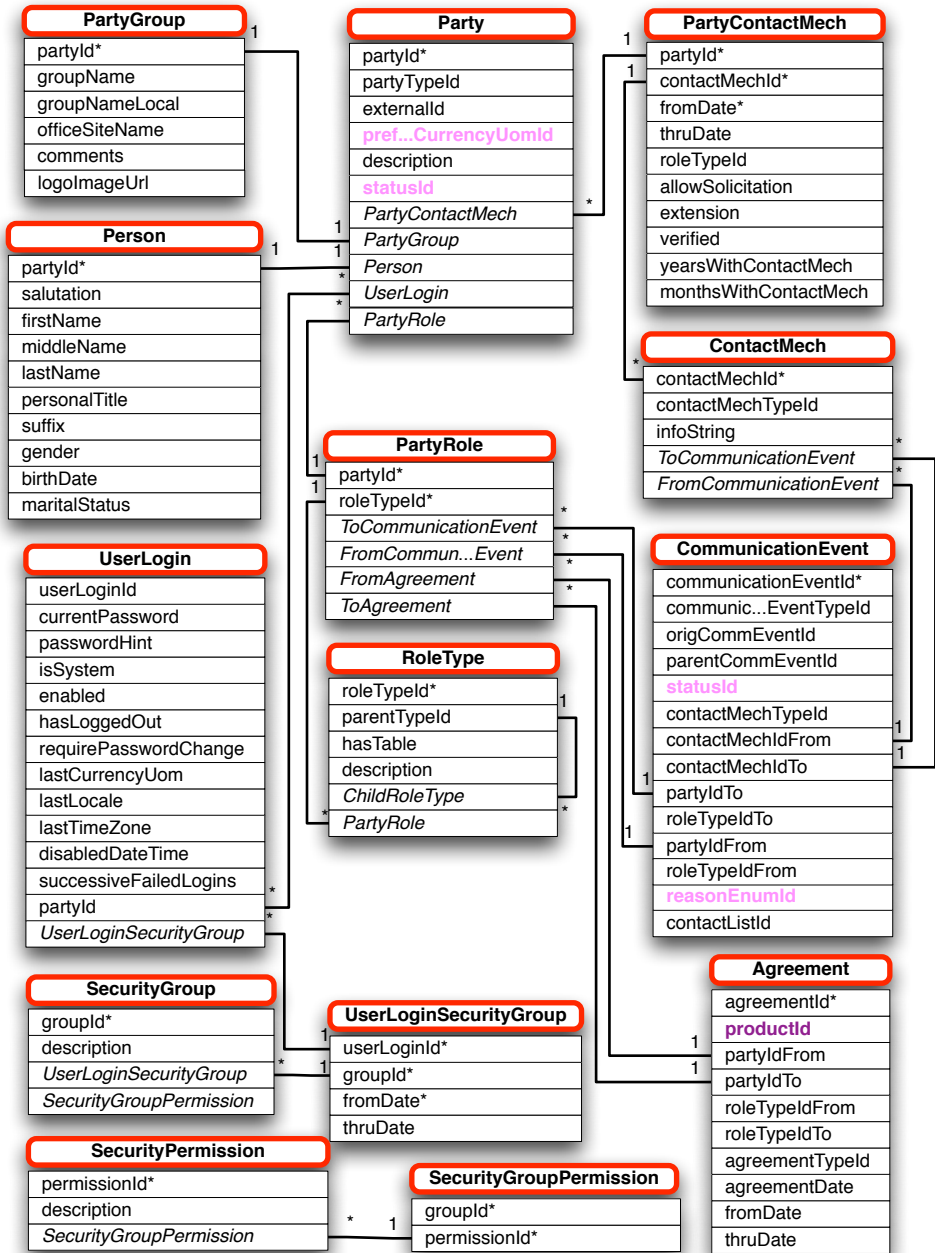
Hello, I am a **DETAIL ENTITY**, as I provide details about the "Master" entity (in this case, the *Example* entity)



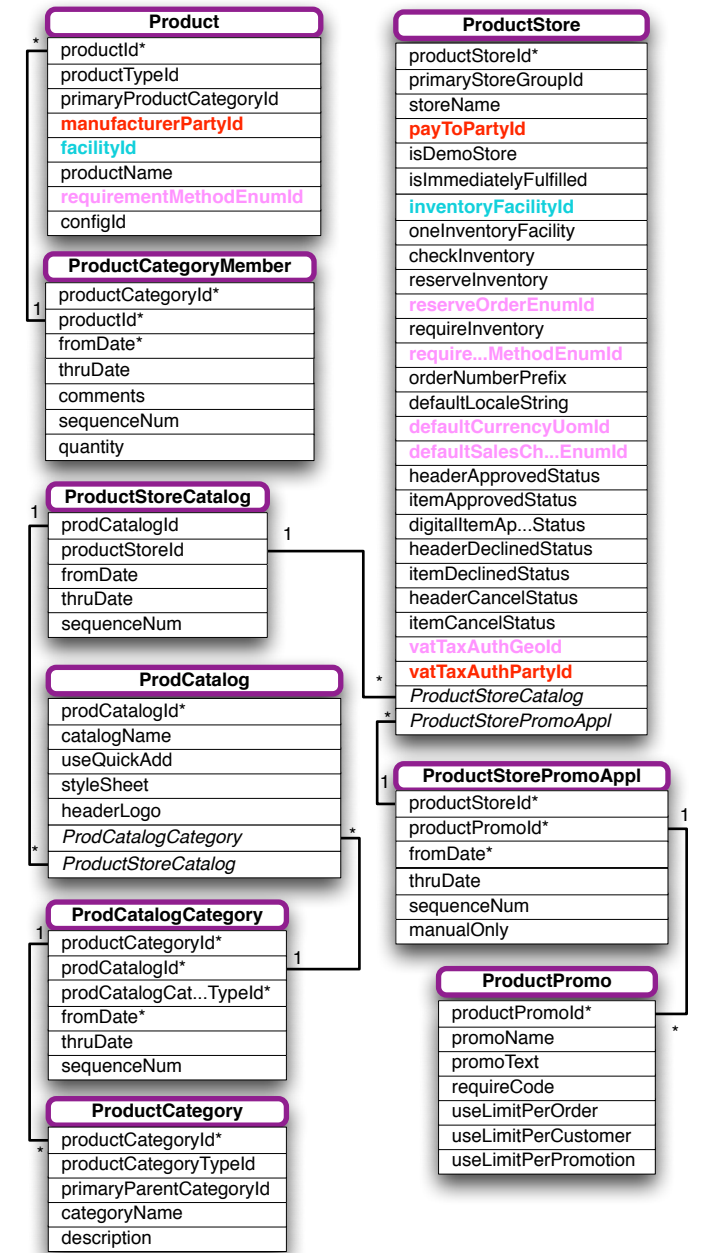
## Top-Level Common Entities



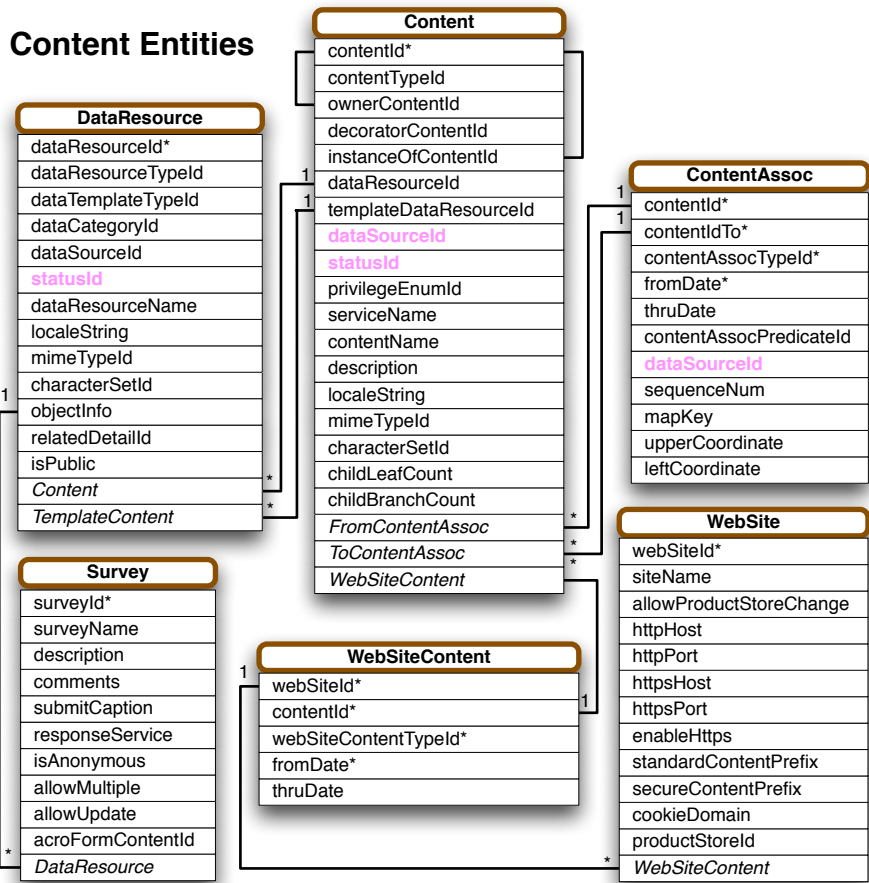
## Top-Level Party Entities



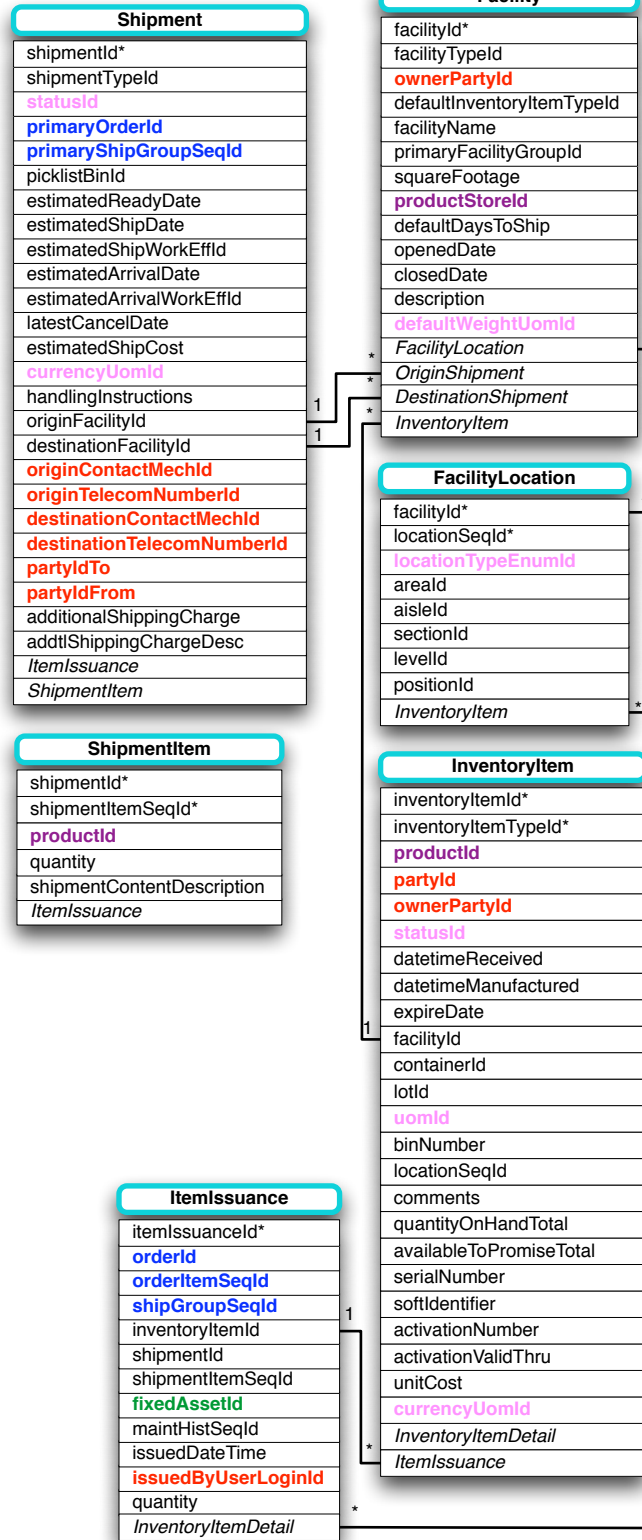
## Top-Level Product Entities



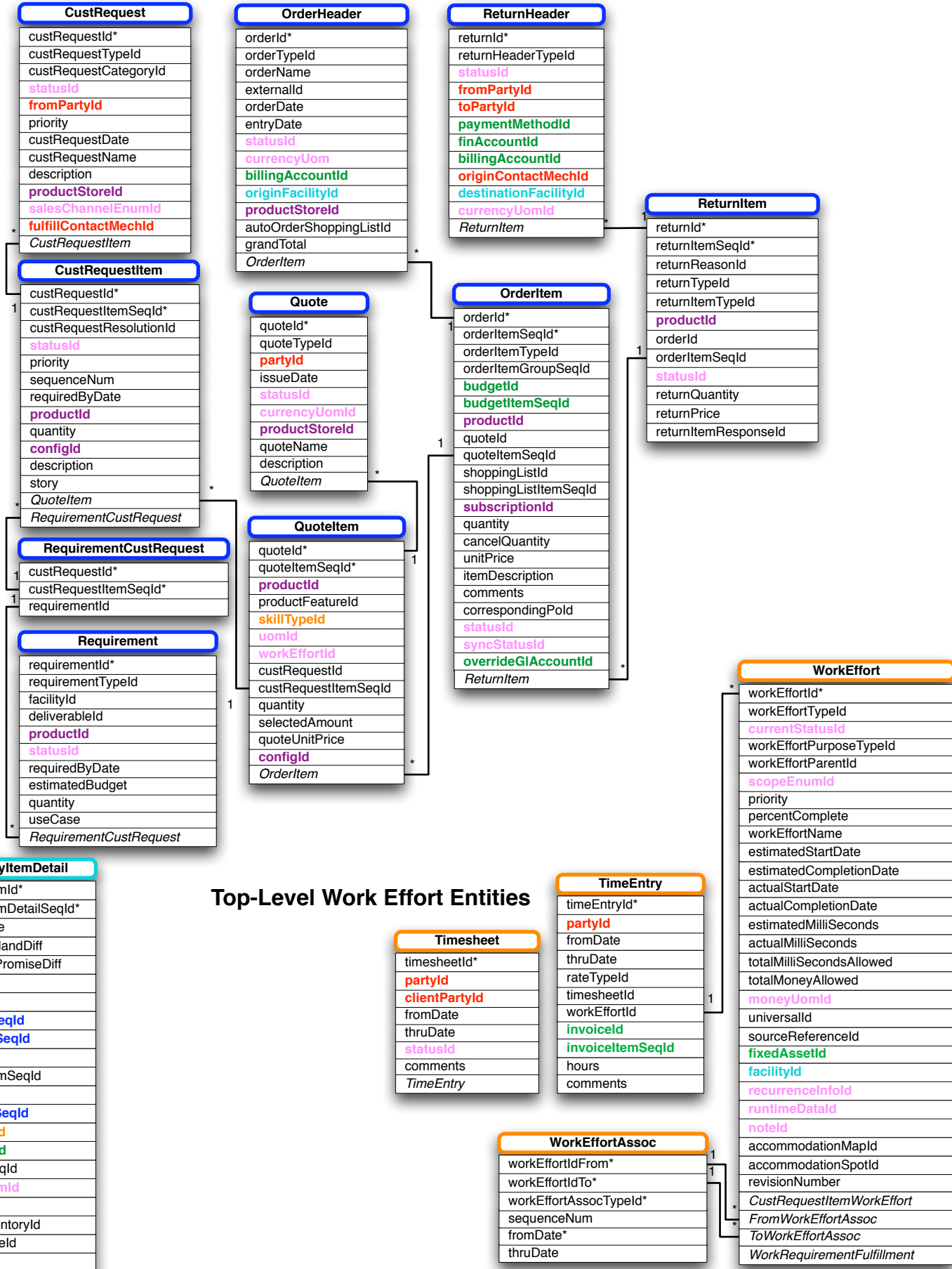
## Top-Level Content Entities



### Top-Level Facility Entities

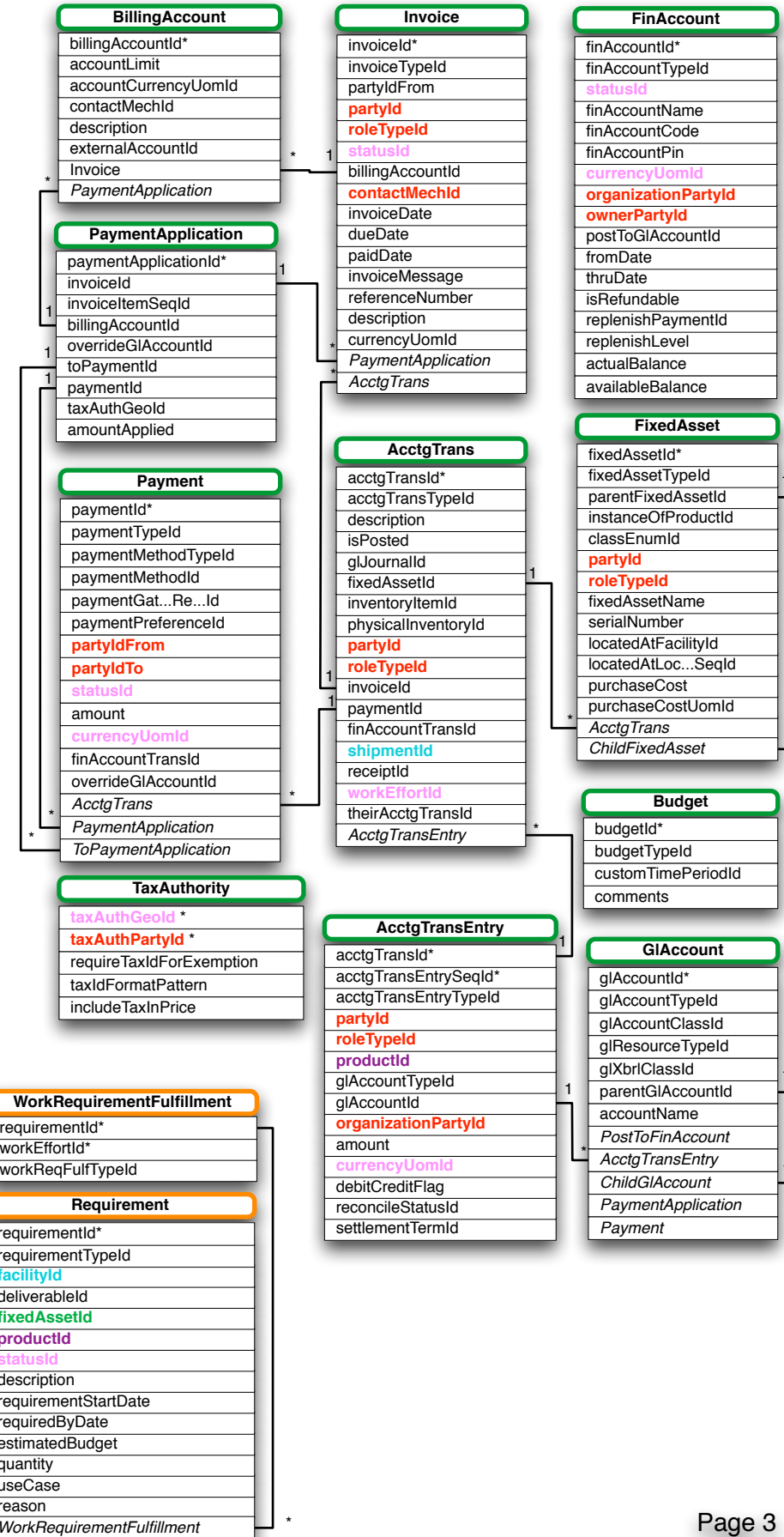


### Top-Level Order Entities

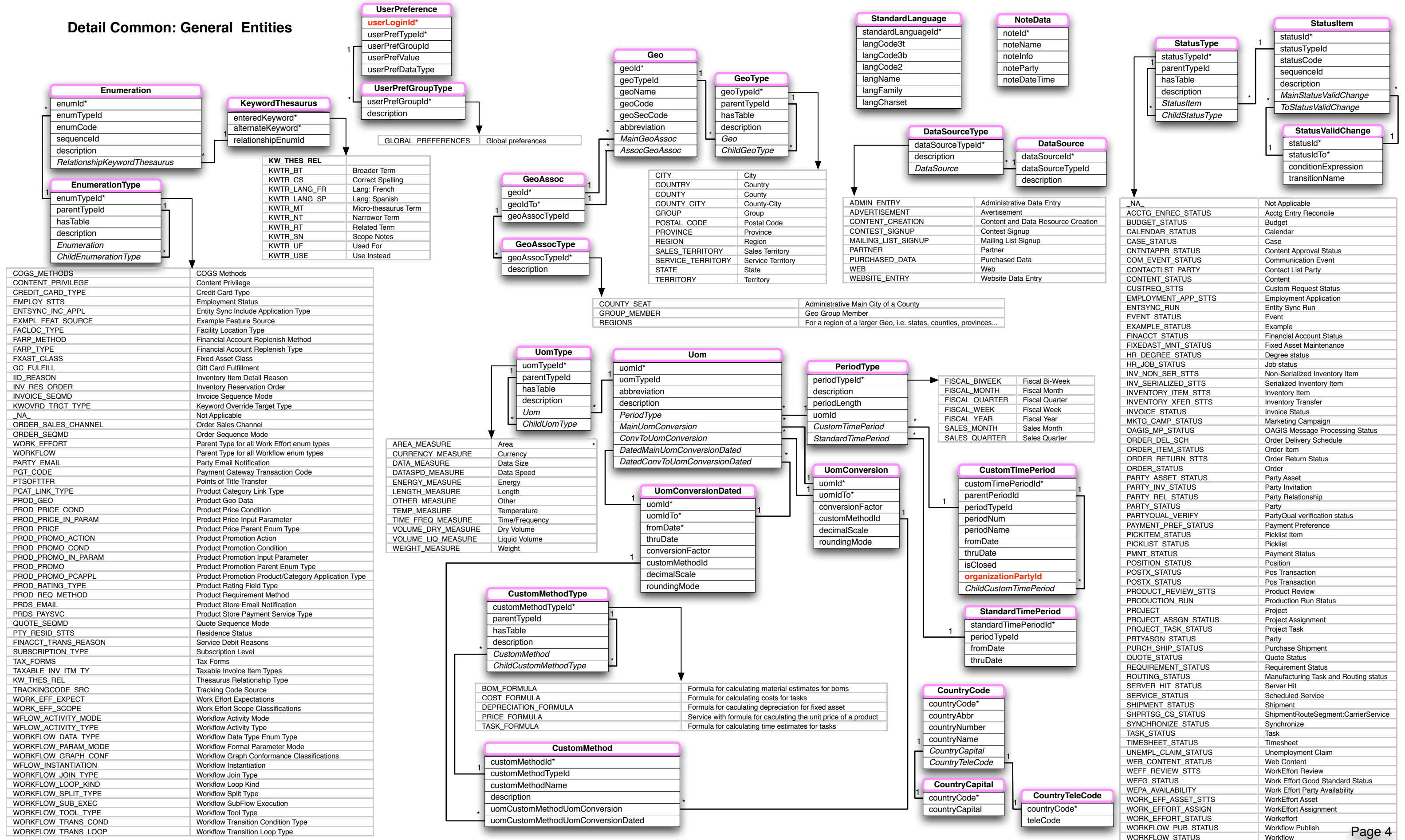


### Top-Level Work Effort Entities

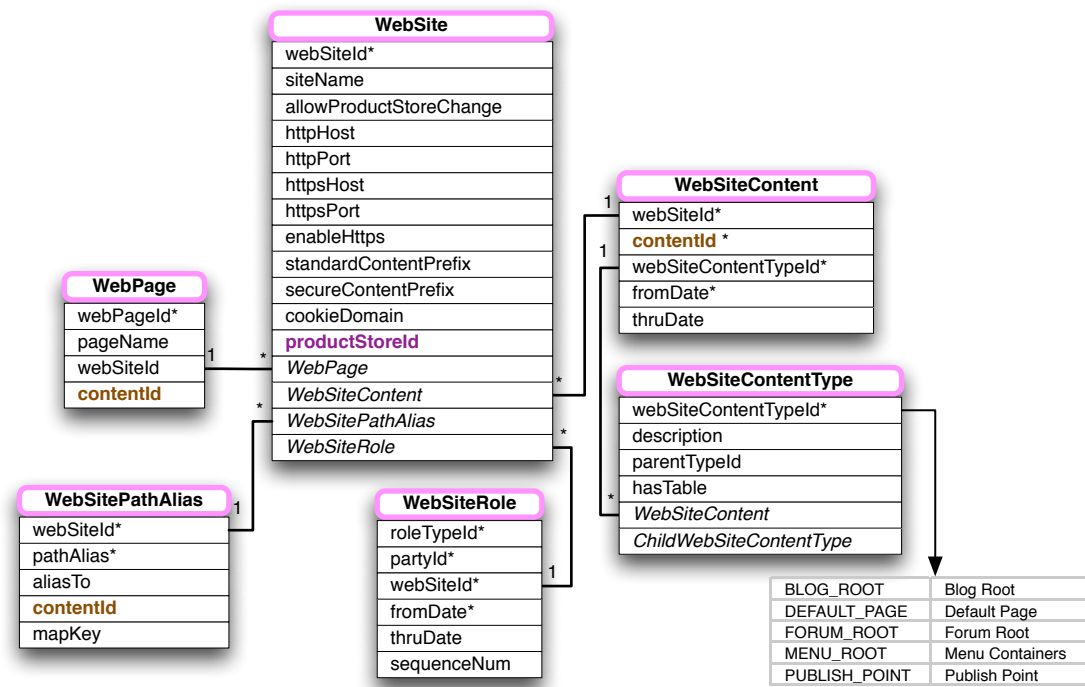
### Top-Level Accounting Entities



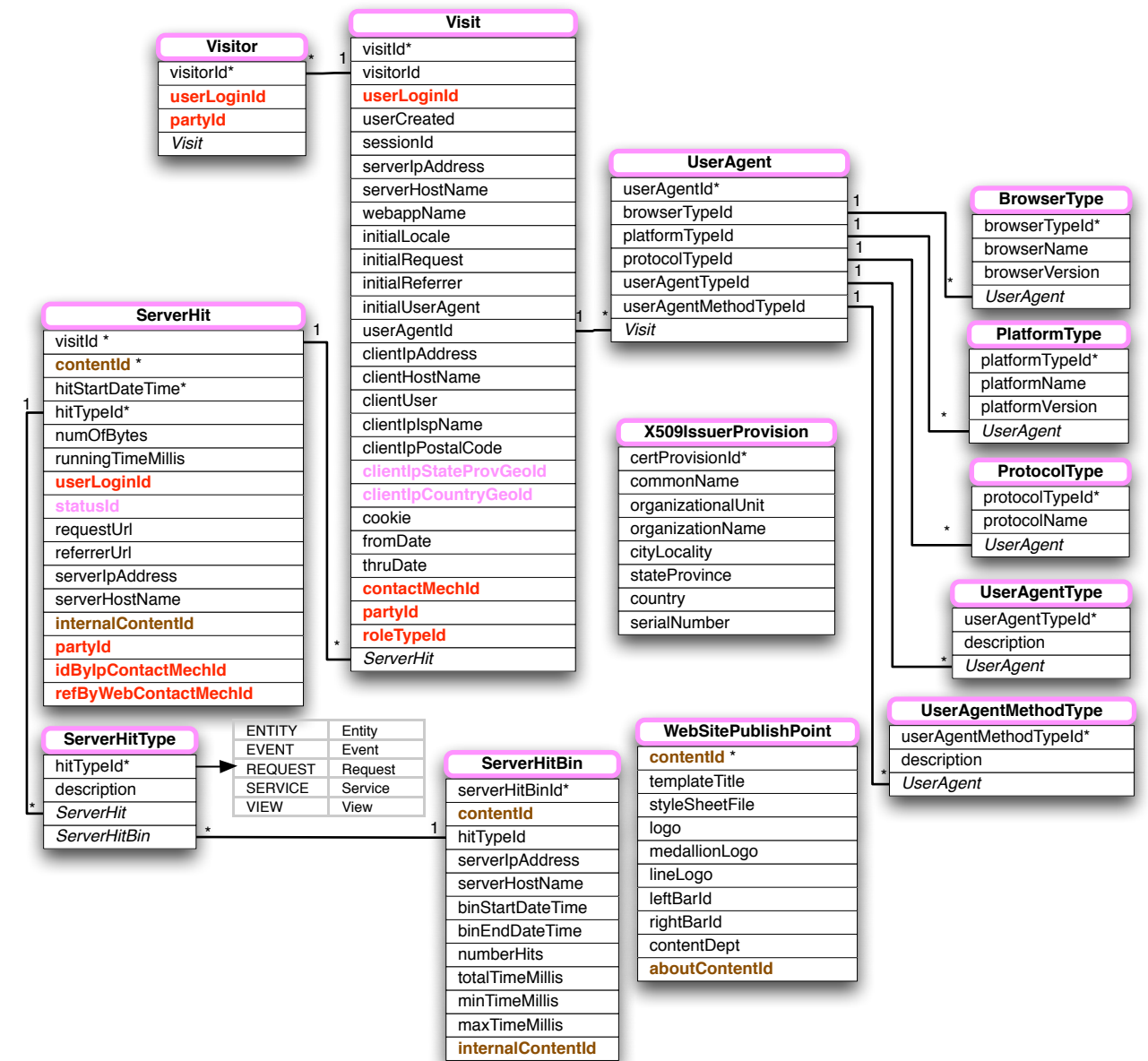
# Detail Common: General Entities



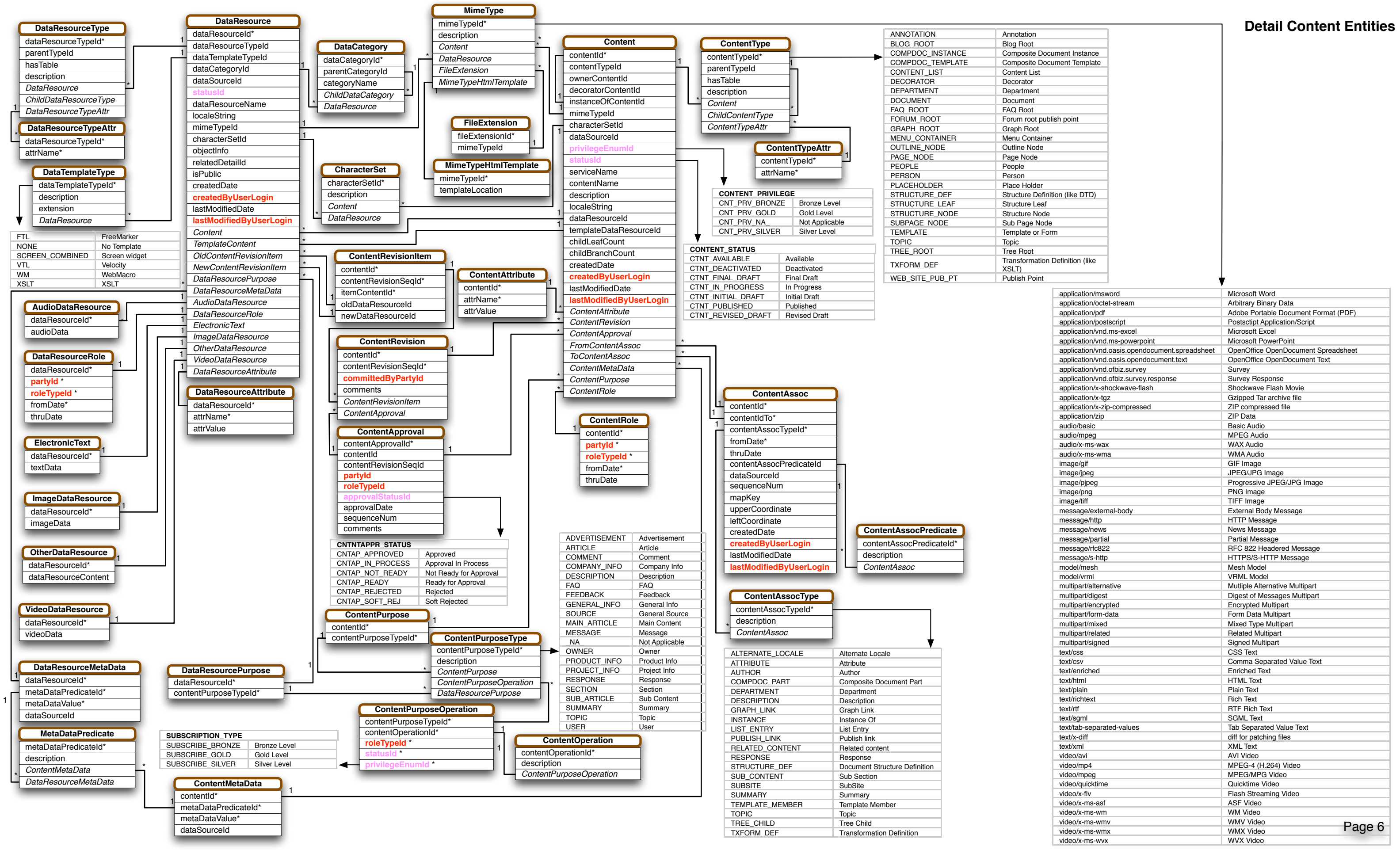
### Detail Common: WebSite Entities



### Detail Common: Visit and Server Entities



# Detail Content Entities



## Detail Content: Survey Entities

