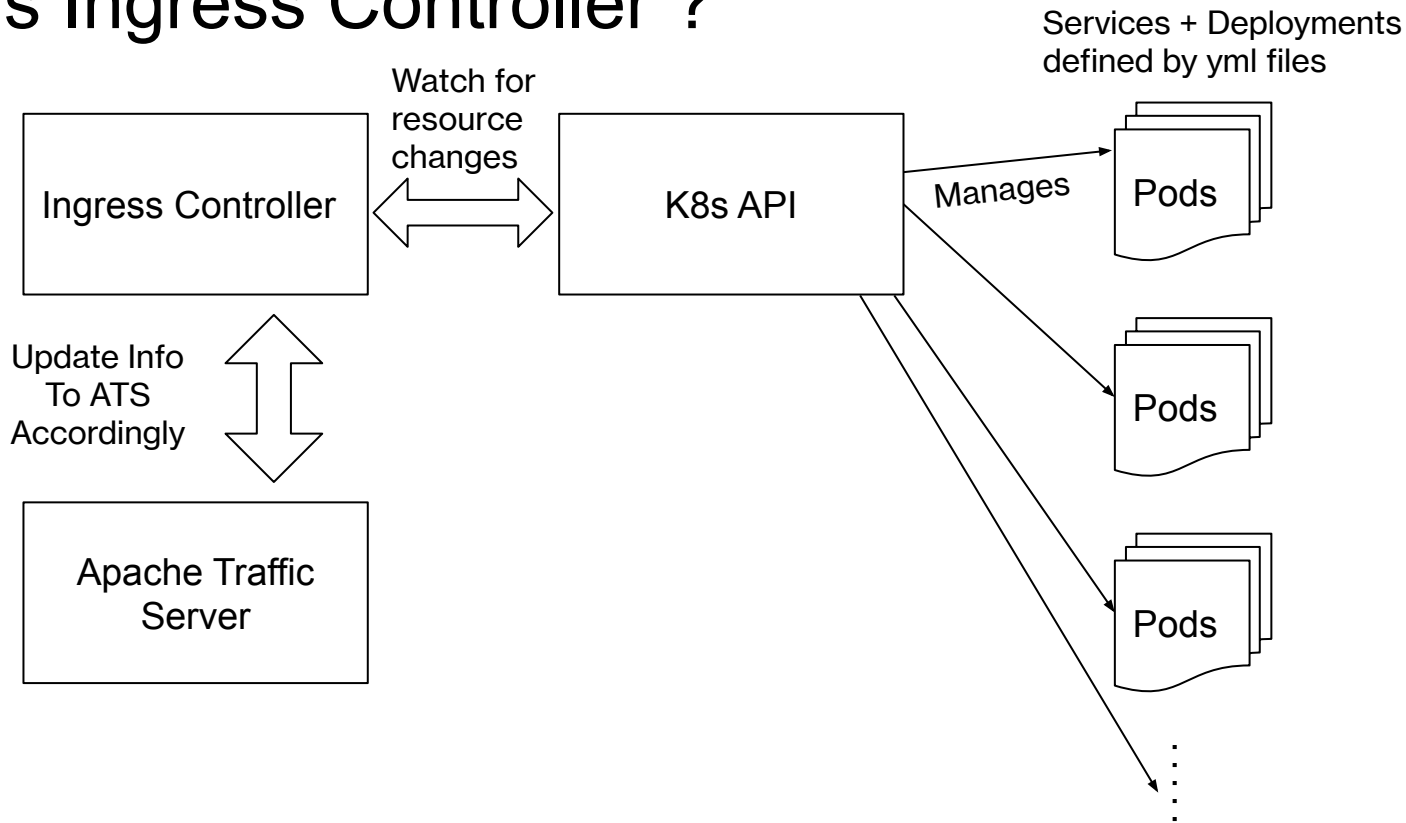


# ATS Ingress Controller

kichan@apache.org

# What is Ingress Controller ?



# Other Examples of ingress controller

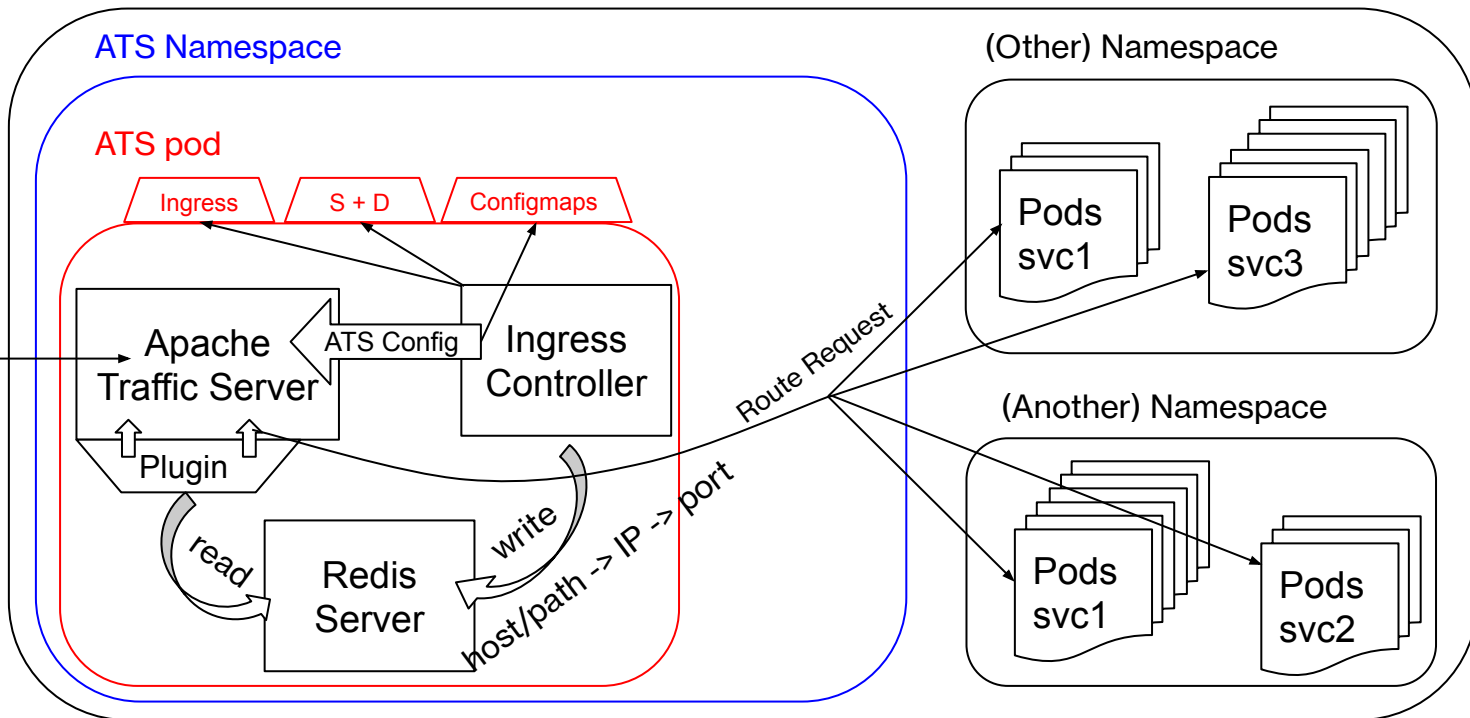
- Nginx
- Haproxy
- Kong , Ambassador(Envoy), Traefik, ...
- ATS ???

# How it works?

Kubernetes Cluster



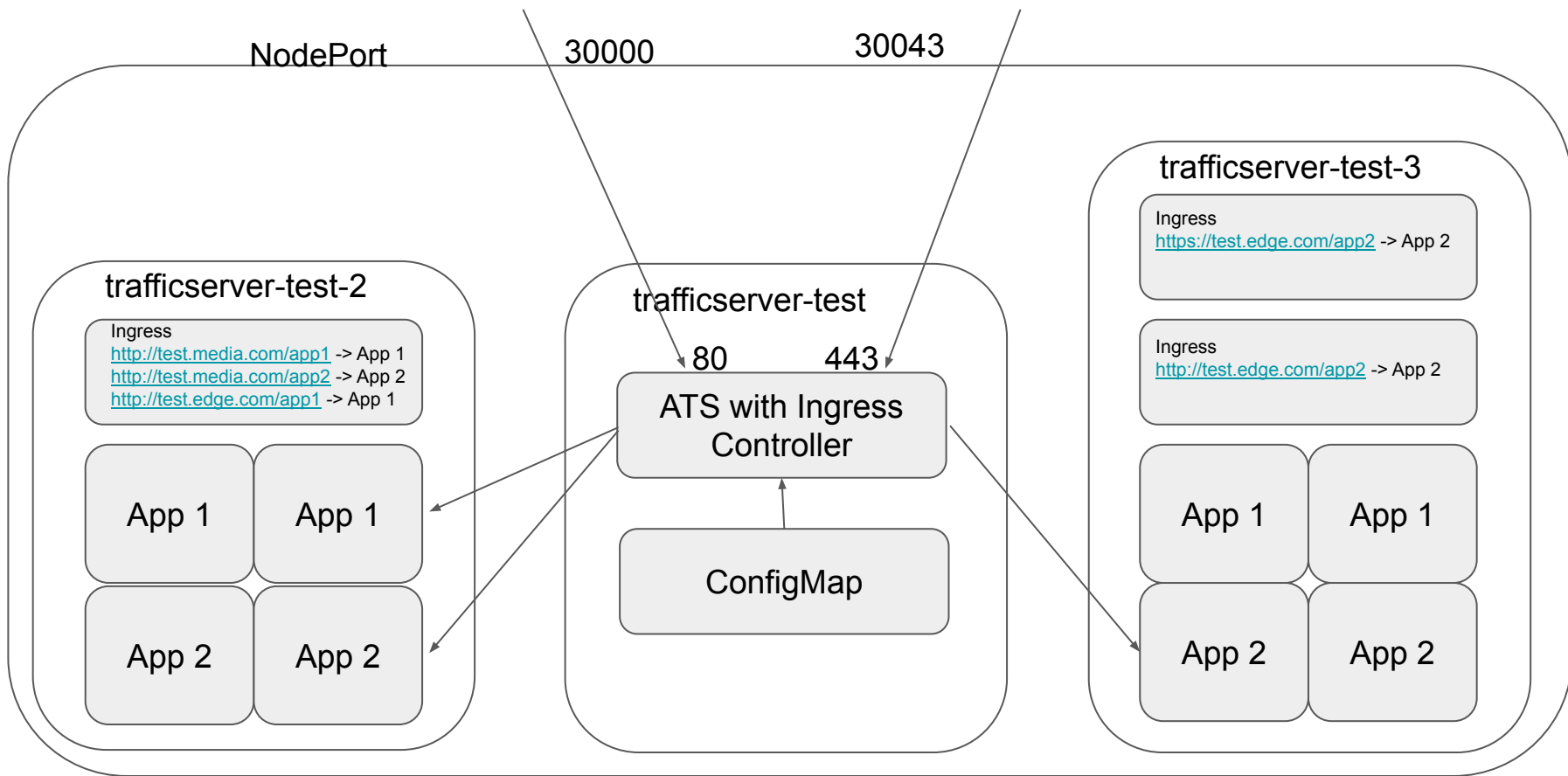
HTTP request



# Open Source

<https://github.com/apache/trafficserver-ingress-controller>

# Demo



# TBD

- CI/CD (WIP)
  - Add tests
  - Publish docker image to public repo
- More Control for ATS
  - MTLS
  - SNI routing
  - Supports Websocket
  - Caching
- More Control for Routing
  - Improvement on use of redis
  - Universal Data Plan API
  - Load balancing options
- Monitoring (WIP)
  - Metrics - Integration with prometheus
  - Application Logging
  - Ingress controller logging
- Production Use(WIP)

# Reference

- Nginx Ingress Controller (from k8s) - <https://kubernetes.github.io/ingress-nginx/>
- Nginx Ingress Controller (from Nginx) - <https://www.nginx.com/products/nginx/kubernetes-ingress-controller/>
- List of Ingress Controllers - <https://kubernetes.io/docs/concepts/services-networking/ingress-controllers/>
- Universal Data Plane API - <https://github.com/cncf/udpa>